

## **Explanatory Notes**

(These Explanatory Notes do not form part of the By-law but are intended for illustrative purposes only.)

# Definition of Yard

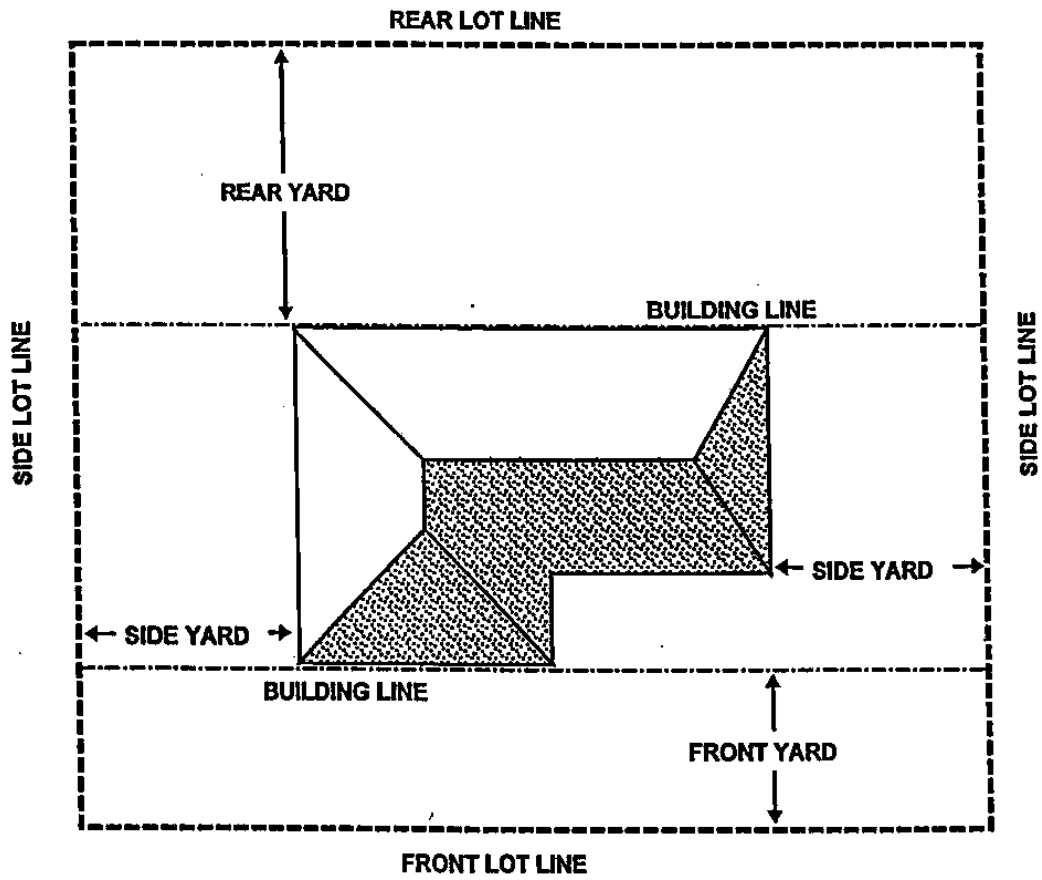


Figure 1: Illustration of Lot Lines and Yards

**Building Envelope**

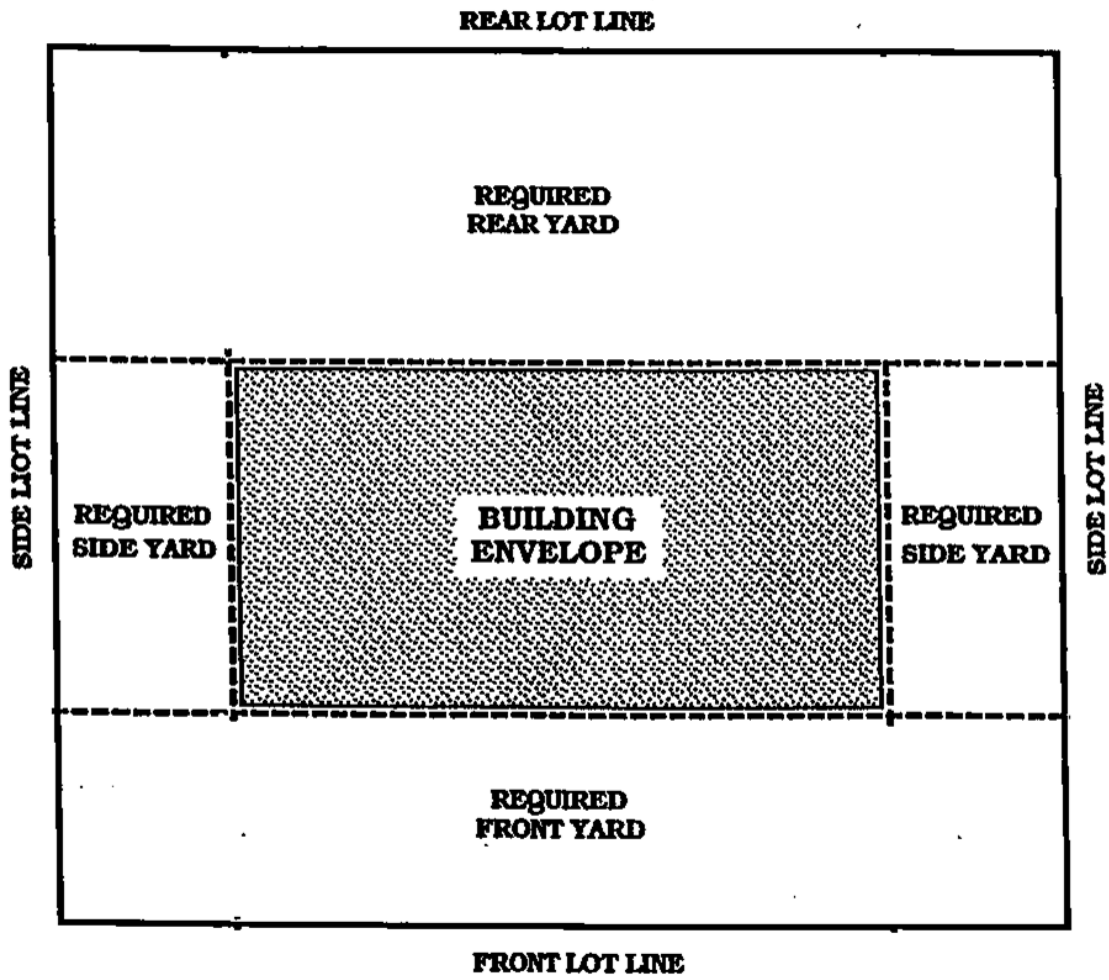


Figure 2: Illustration of Building Envelope

## Illustrations Of Dwelling Types

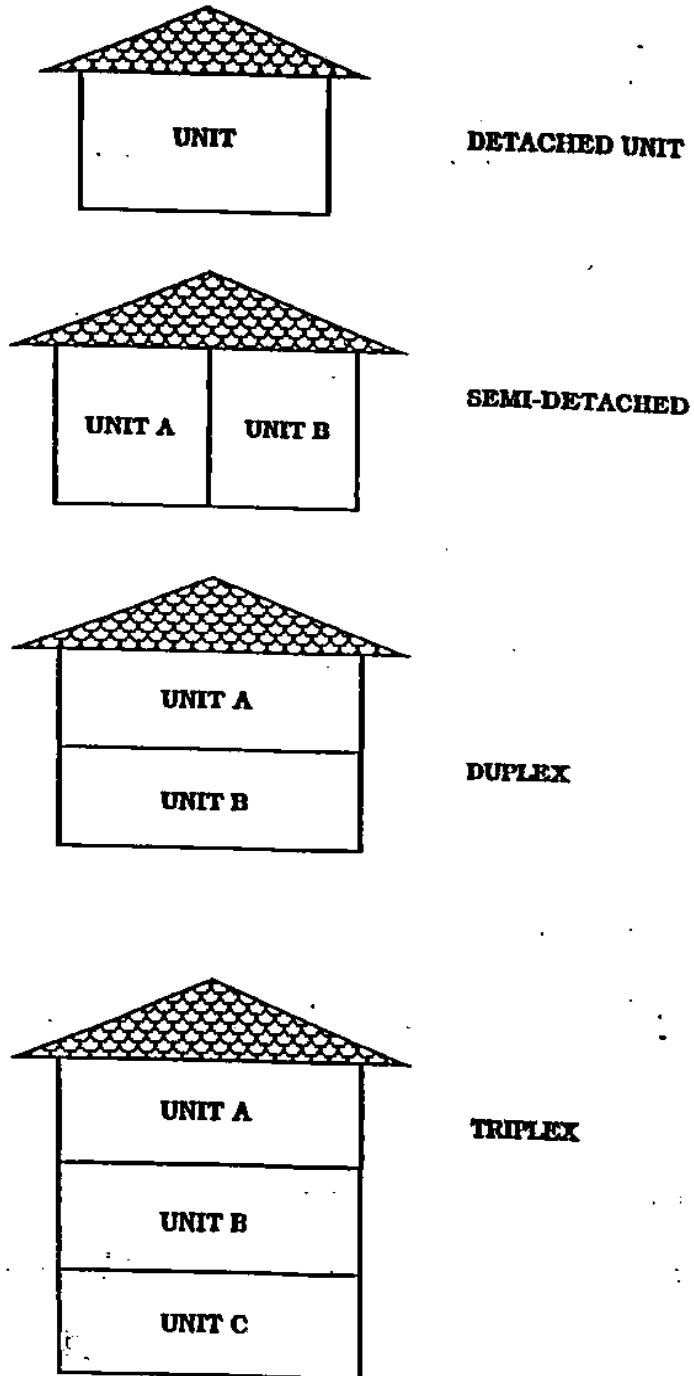
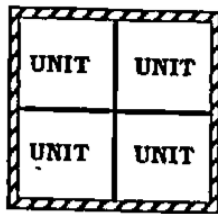
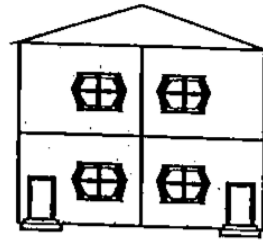


Figure 3: Illustration of various residential dwelling types

## Illustrations of Types of Dwellings

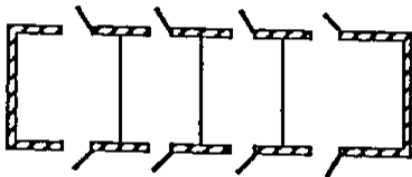


TOP VIEW



FRONT VIEW

### FOURPLEX DWELLINGS

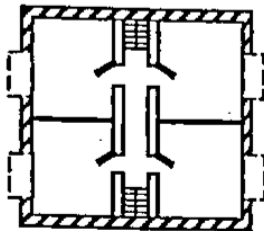


TOP VIEW

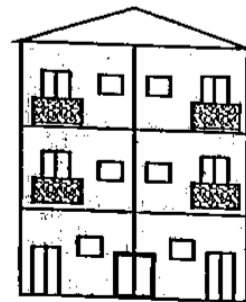


FRONT VIEW

### ROW DWELLINGS



TOP VIEW



FRONT VIEW

### APARTMENT DWELLINGS

Figure 4: Top and front views of a fourplex, row dwellings, and apartment dwellings

# Illustrations of Building Height

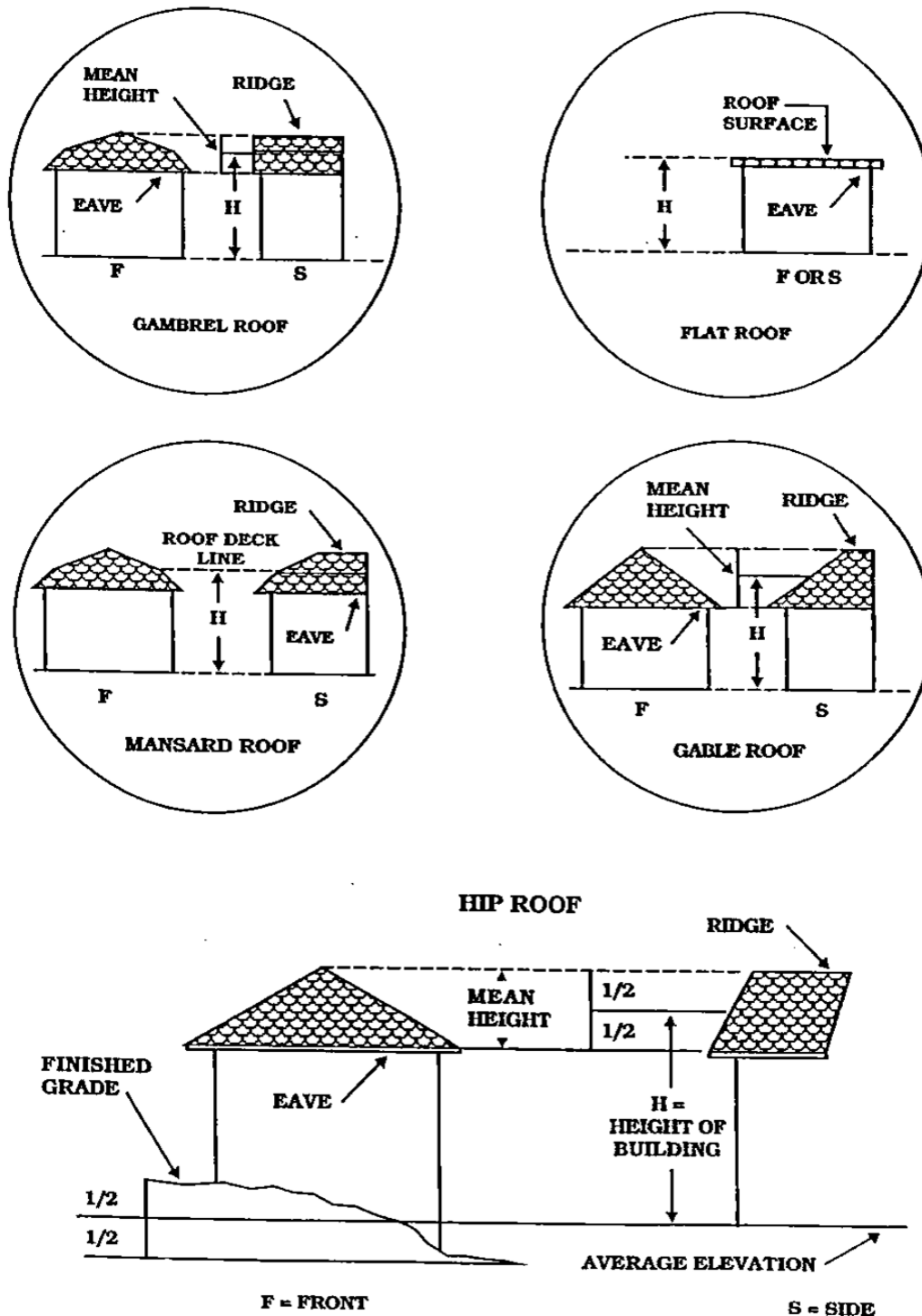


Figure 5: Gambrel, Flat, Mansard, Gable, and Hip roof types

Definition of Types of Lots

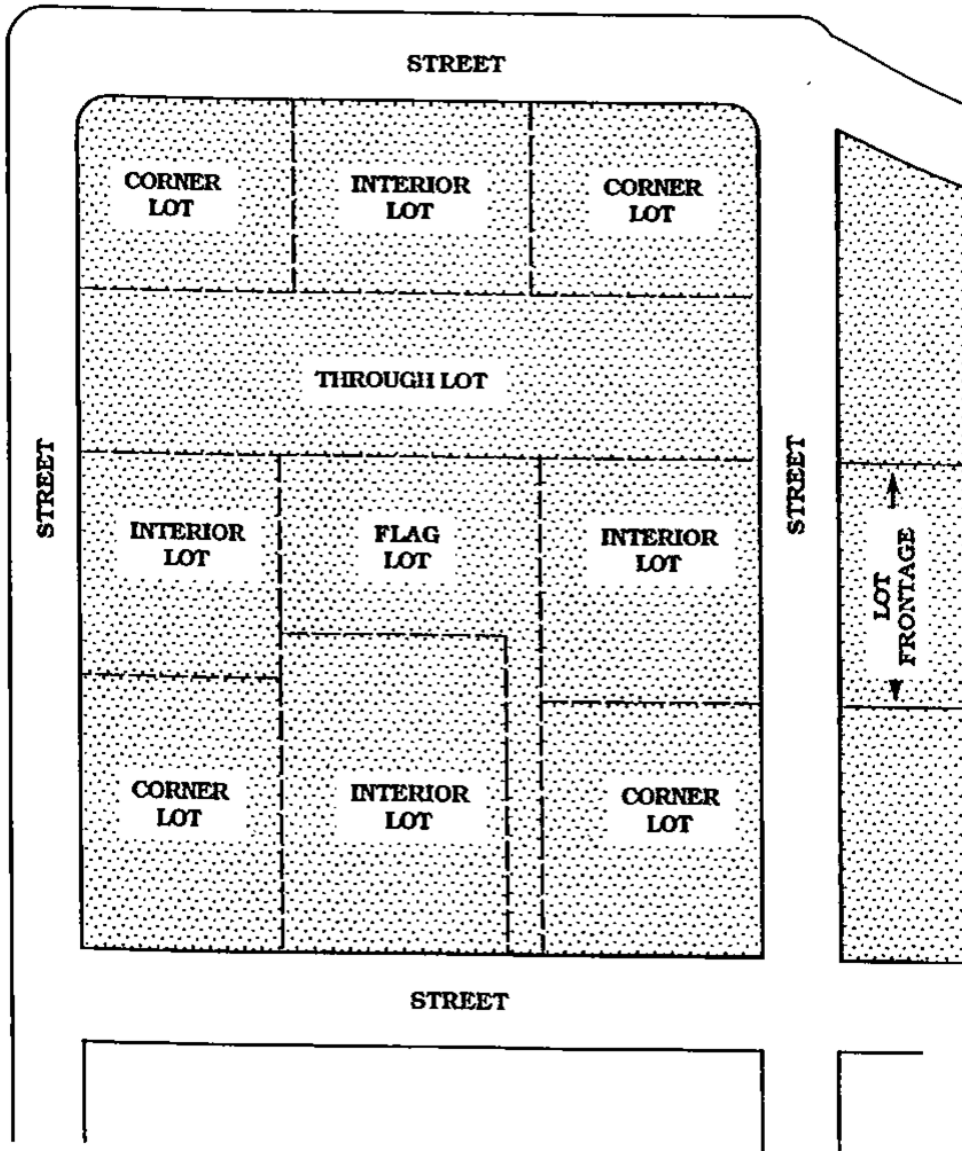


Figure 6: Various Lot types along a street

Examples of Lot Definitions

**EXAMPLES OF LOT DEFINITIONS**

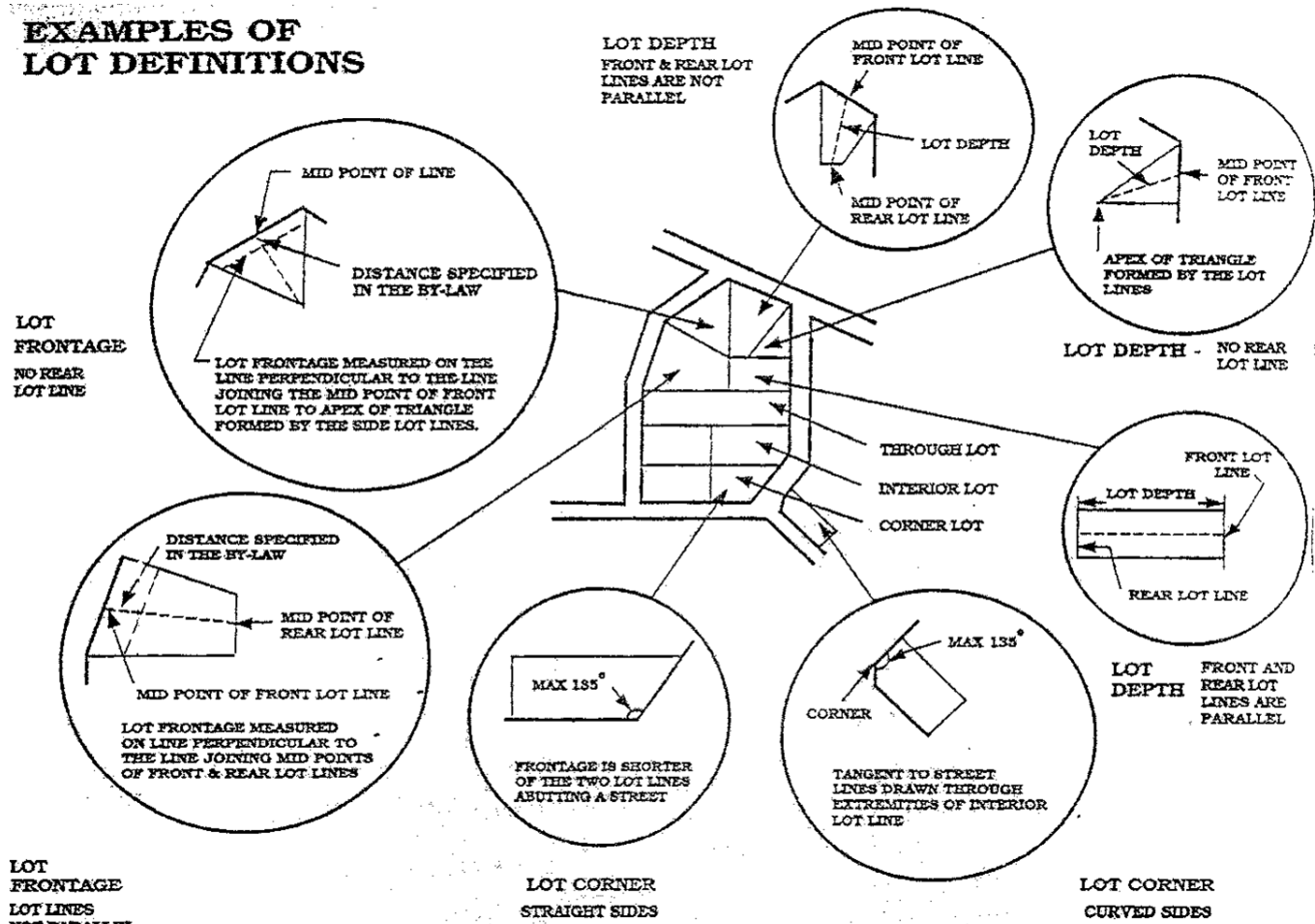


Figure 7: illustrations of how lot frontage and lot depth are measured for different irregular lot shapes

# Lot Line Descriptions

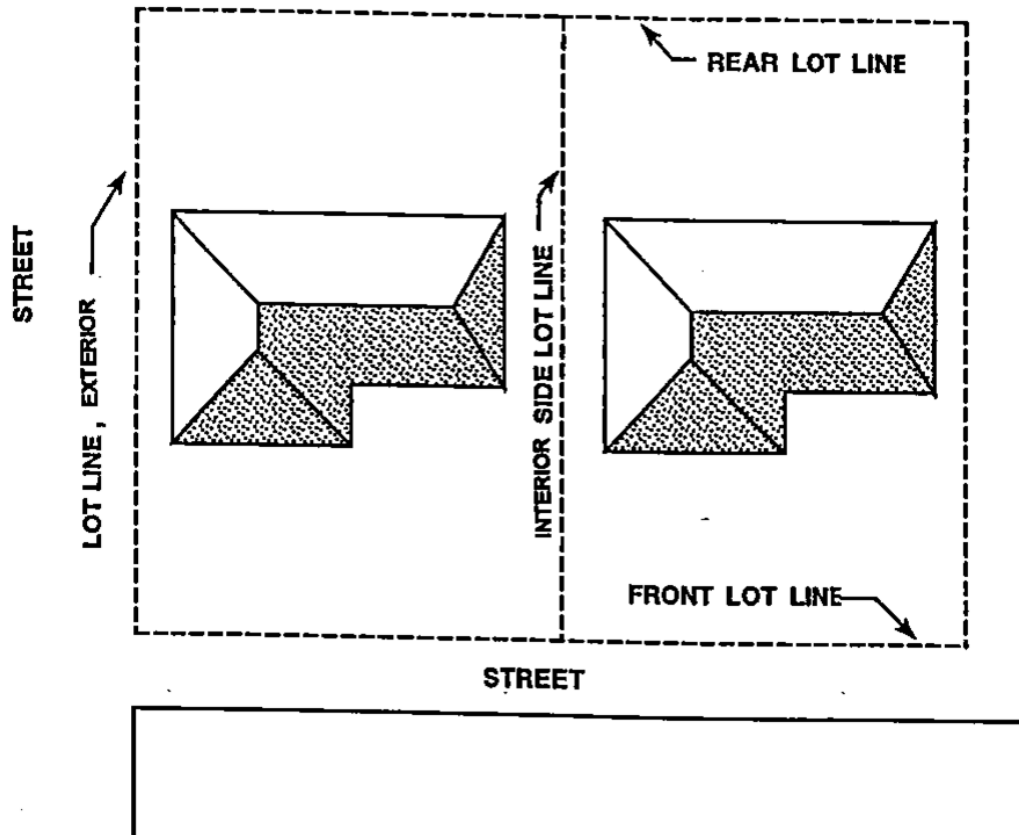


Figure 8: Front, rear, interior, and exterior lot lines

**Parking Area Illustration**

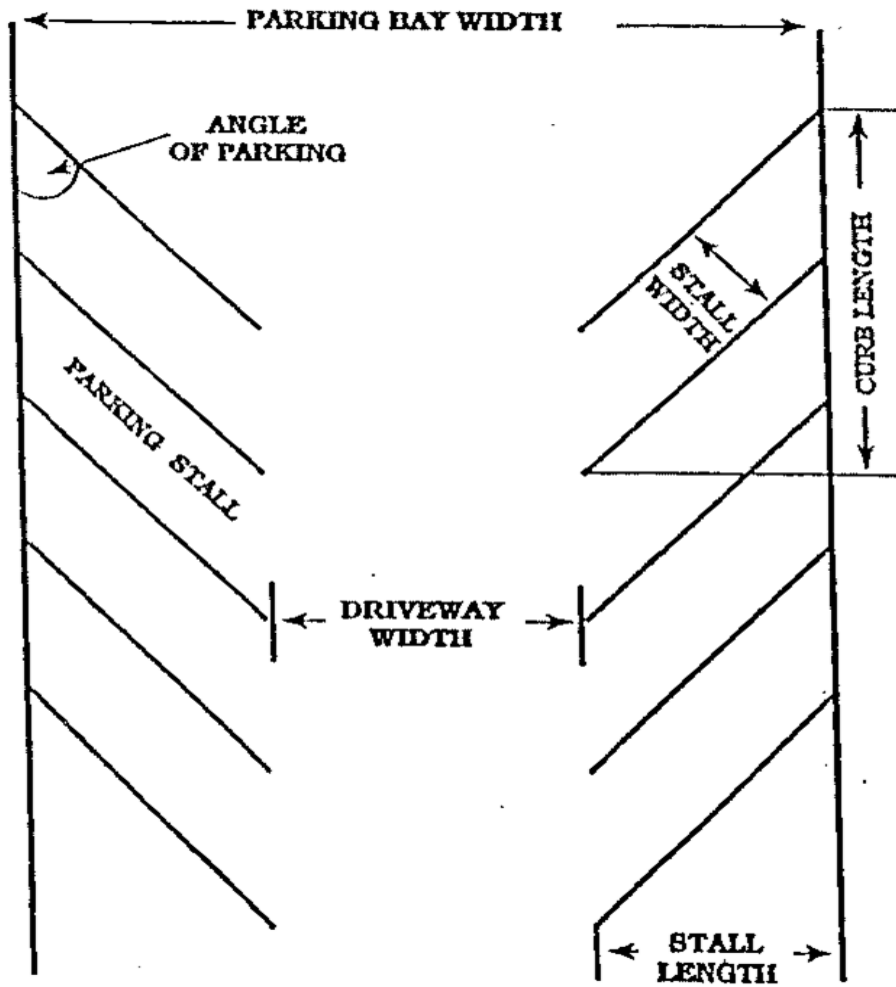


Figure 9: Angle parking layout and dimensions